

1310/1550nm Polarization Insensitive

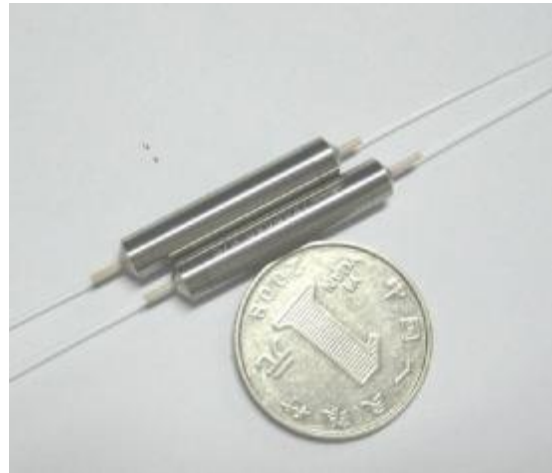
SM Fiber Isolator

Features:

- | High isolation
- | Low insertion loss
- | High return loss
- | Low polarization sensitivity
- | Optical path epoxy free

Applications:

- | Fiberoptic amplifiers
- | CATV fiberoptic links
- | Fiberoptic systems testing
- | Fiberoptic LAN systems
- | Telecommunications



Specifications: (Standard) Single stage

Parameter	Premium	A Grade
Operating Wavelength (nm)	1310 or 1550	
Typical Peak Isolation (dB)	42	40
Minimum Isolation * (dB)	≥32	≥30
Typical Insertion Loss** (dB)	≤0.35	≤0.45
Maximum Insertion Loss*** (dB)	≤0.5	≤0.7
Return loss (In/Out) (dB)	≥60	≥55
PDL (dB)	< 0.05	< 0.1
PMD (ps)	0.2(0.05 available upon request)	
Bandwidth (nm)	±15	
Operating Temperature (° C)	-5 ~ + 70	
Storage Temperature (° C)	-40 ~ +85	
Fiber Type	SMF-28e bare fiber	
Fiber Length (Min.)	1 Meter Each End	
Package Dimension (mm)	5.5x30	
Power Handling (mW)	300	

Note: 1. * At 23° C over bandwidth

2. ** Does not include connector, splice and fiber-end fresnel losses

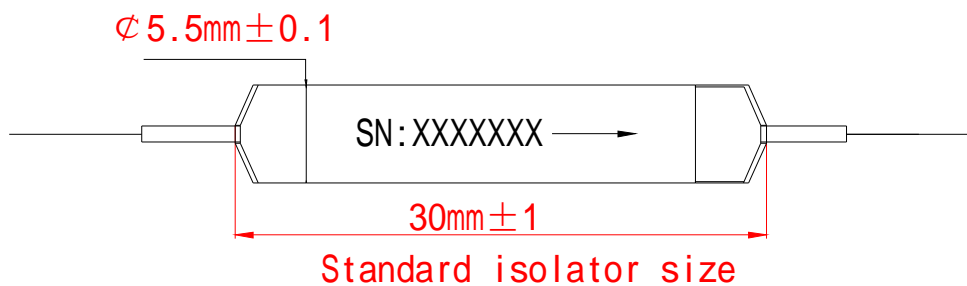
3. *** Including PDL, center wavelength ± 15 nm, -5 to ± 70° C

Specifications: (Standard) Dual stage

Parameter	Premium	A Grade
Operating Wavelength (nm)	1310 or 1550	
Typical Peak Isolation (dB)	52	50
Minimum Isolation * (dB)	>46	>45
Typical Insertion Loss** (dB)	<0.45	<0.6
Maximum Insertion Loss*** (dB)	<0.6	<0.8
Return loss (In/Out) (dB)	>60	>60/55
PDL (dB)	<0.05	<0.1
PMD (ps)	0.1(0.05 available upon request)	
Bandwidth (nm)	+30	
Operating Temperature (° C)	-5 ~ + 70	
Storage Temperature (° C)	-40 ~ +85	
Fiber Type	SMF-28e bare fiber	
Fiber Length (Min.)	1 Meter Each End	
Package Dimension (mm)	5.5x30	
Power Handling (mW)	300	

- Note:**
- * At 23° C over bandwidth
 - ** Does not include connector, splice and fiber-end fresnel losses
 - *** Including PDL, center wavelength ± 30 nm, -5 to ± 70 ° C

Dimension:(mm)



Ordering Information:

OIS-XX-XXXX-X-XX-XX

A
B
C
D
E
FG

A	Type	IS=Single stage
		IU=Dual stage
B	Wavelength	13=1310nm
		14=1480nm
		15=1550nm
		LB=L Band
		XX= Customer
C	Grade	P= Grade "P"
		A= Grade "A"
D	Pigtail Style	1=250um Bare Fiber
		2=900um Jacket
		3=3mm Cable
E	Fiber Length	1=1.0m
		2=1.5m
		3=2.0m
		4=Customer Length
FG	In/Out Connector	0=None
		1=FC/APC
		2=FC/PC
		3=SC/APC
		4=SC/PC
		5=ST
6=LC		